



YACHT  GRAPHX™

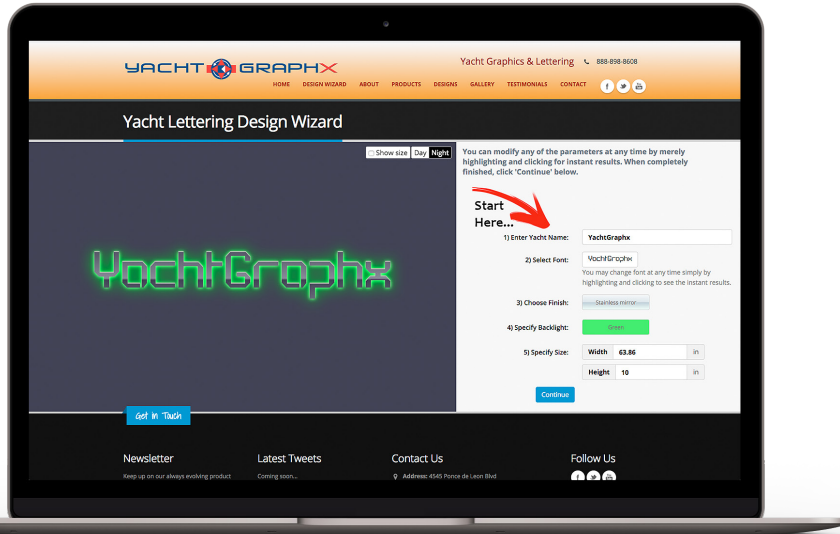
Backlit Names for Yachts

# QUICK AND EASY CUSTOM CRAFTED LETTERS

GET STARTED WITH OUR FREE

*Design Wizard*

[www.YACHTGRAPHX.com/WIZARD](http://www.YACHTGRAPHX.com/WIZARD)



THE EASY PROCESS FOR YOUR CUSTOM LETTERS

We will quickly provide you with an preliminary estimate based on the following:

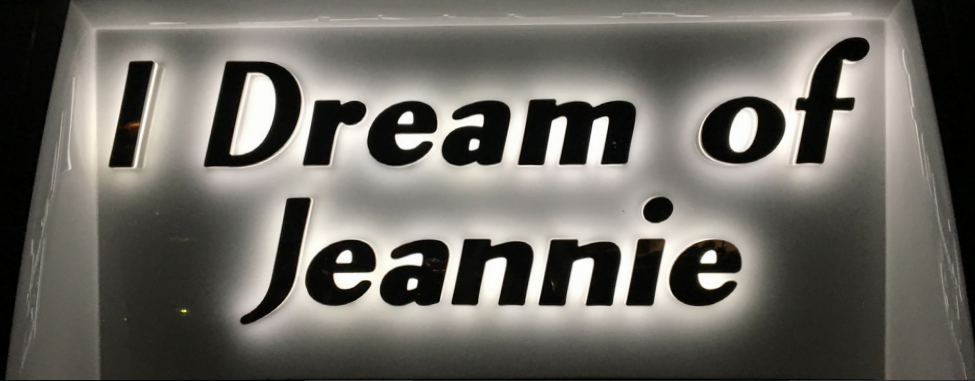
- 1) Font Style** of your design. We have a variety of different typefaces for you to chose from; bold or thin to modern or scripted. Or you can bring your own fonts and logos.
- 2) Letter size** or height and based upon the available space on your boat sides or transom.
- 3) Surface material** of letter construction, the most popular of which are stainless steel, acrylic, or special surfaces are available upon request.
- 4) Illumination** can be set up as backlit or front illuminated letters with either single color monochrome or multi-colors RGB. Each letter and symbol is individually electrically engineered and designed to provide uniform illumination to every part of the letter including the edges and around the fastenings.
- 5) 3D Backing** is available to increase letter thickness for non-illuminated letters and used as the housing of the LEDs for outstanding light diffusion on backlit letters.
- 6) Mounting** is easily accomplished using our supplied templates with self-adhesive, mechanical fastenings, or one of our many proprietary stand-off systems.

#### Purchase process:

Once the quote is agreed upon, an order will be completed requiring a small deposit at which time our talented Yacht Graphx designers will consult with you to create and finalize your personalized and custom graphics or name in the font, style, and size of your choice.







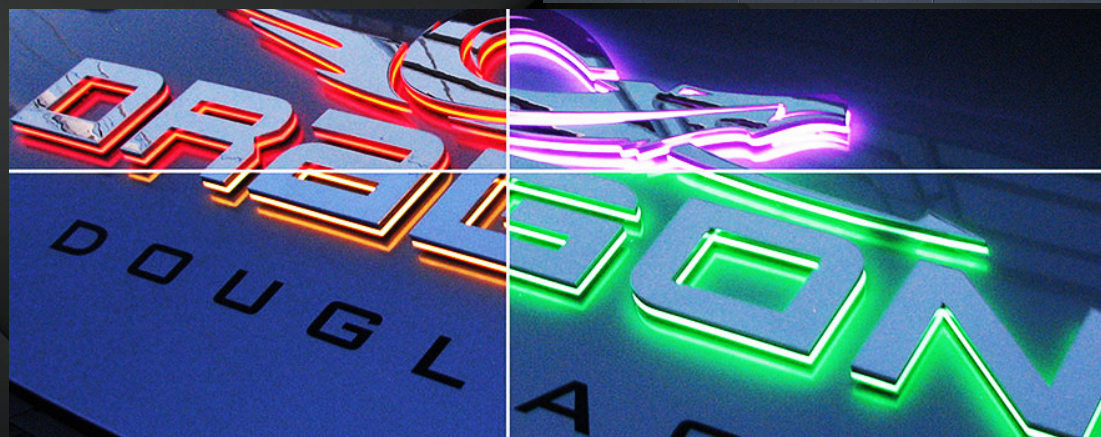
## CUSTOM CRAFTED LETTERS

Select any Font - Design - Size - Material

**WORLD'S FINEST YACHT LETTERS AND NAME BOARDS**

Seen on many of the world's top 200 super-yachts and thousands of other boats. We have the ability to design and manufacture anything you may want created!

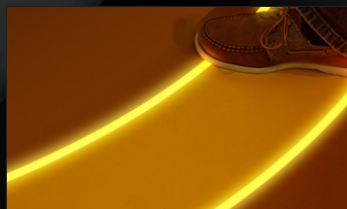
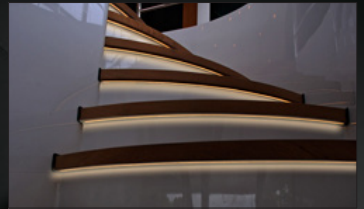
**WorldWide Sales & Service**



Let us help you transform the look of your yacht!



*Custom crafted name boards & logos, stairways, surfaces, and helipads / limitless ap-*



Contact us for a FREE estimate and preliminary design!



Your vision.  
Our craftsmanship.

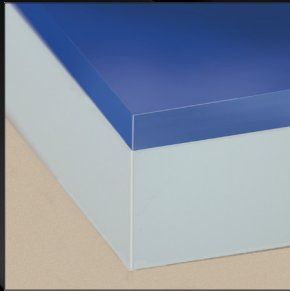




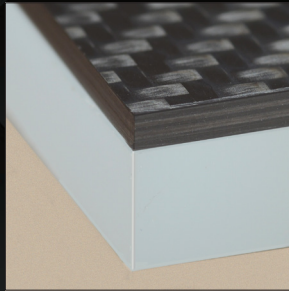
## Sample Surface Materials - Many Others Available



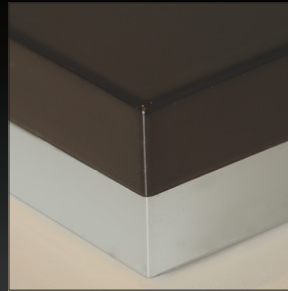
- Colored Film Surface
- Satin Acrylic Backing



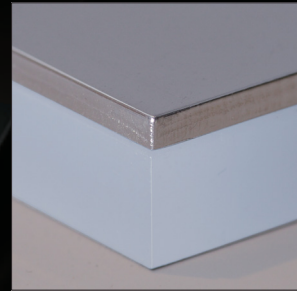
- Colored Acrylic Surface
- Satin Acrylic Backing



- Carbon Fiber Surface
- Satin Acrylic Backing



- Surface and Side Colored  
Lacquer Resin
- Satin Acrylic Backing

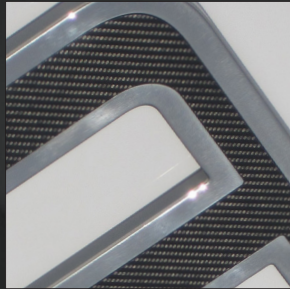


- High Mirror Polished or  
Brushed Stainless Steel
- Satin Acrylic Backing
- \*Radius Rounded Edges also  
Available.*

## Combination Materials and 3D Printing Also Available



- High Mirror Polished  
Stainless Steel with  
Middle Layer of Colored  
Acrylic



- Carbon Fiber Surface with  
Stainless Steel Frame



- Custom Made Stainless  
Steel Backing with PVD  
Gold Coating



- Solid Letter in Polished  
Stainless Steel Backlit



- Silver Lacquer on Resin

*If you can imagine it, we can manufacture it!*







**SUGARAY**

**Rio**



**VIEW OUR GALLERY**  
[www.YachtGraphx.com/Gallery](http://www.YachtGraphx.com/Gallery)

**Imagine**

**It's Enough**

**DOUBLE**







## ABOUT US

As part of The Yacht Group, Yacht Controller, Yacht Thruster, Yacht Graphx, Yacht Command, Yacht Cam and Yacht Beam. We provide the yachting community with high-quality products, professional sales, and service. The hallmark of our brands is “innovative technology for the marine industry”. Our products are in use by satisfied customers on thousands of yachts of all sizes from more than hundreds of brands.

## YACHT CONTROLLER®

The yachting world's key to wireless control of a yacht during docking and maneuvering. With 15,000+ installed systems on more than 200 brands of yachts ranging in size to over 50 meters, the flawless proven security and dual-band dependability of Yacht Controller allows yacht operators to confidently control their engines, thrusters, and anchors with pleasure in absolute precision and safety from anywhere on board.



Yacht Controller JCS ( Joystick Control System) transforms a yacht's control easily, simply and cost-effectively to a simple-to-use joystick fusing numerous equipment commands into one control. Available for all types of engine controls and thrusters. Our proven system will allow you to have complete control over your vessel from fixed JCS stations (up to 6) or wirelessly when combined with our classic wireless remote or our “Fusion” remote JCS system. Yacht Controller JCS is easy to install on any size boat or yacht, whether a 40-meter Superyacht or our “Sport System” for a 40 ft. boat. Enjoy the ease of joystick control with Yacht Controller JCS.



## YACHT THRUSTER™

The world's number one selling externally mounted thruster for bow and stern applications on both power and sailboats. Precision production produces a rugged housing, manufactured out of solid machined aluminum with a hand built sealed motor, using rare earth elements for extraordinary power, reliability, and long life with low power consumption. Our Yacht Thrusters are water cooled, so they have exceptionally long continuous run time.



Easy Drive



## YACHT COMMAND™

The perfect system to convert boats with mechanical or hydraulic controls to an easy to use, reliable modern electronic control system, which provides gear shifting, throttle, warm up, synchronization and more in a polished stainless steel housing for beauty and durability. Upgrade your boat and make it safer while adding to its value and improving your boating experience.

## YACHT VISIONS

Redefining low-light navigation! Offering Yacht Cam cameras for ultra low-light and thermal infrared imaging and (PTZ) pan-tilt-zoom control designed specifically for use in the marine industry. Yacht Beam searchlights provide 1 million, 6 million, and 8 million candlepower high power commercial searchlights for your yacht. This is the most essential piece of equipment on board for safety at sea during low-light or night operation.





*"Innovative Technology for the Marine Industry"*

+1.888.898.8608 [TheYachtGroup.com](http://TheYachtGroup.com) +1.305.667.5811

**Corporate Office**

4545 Ponce de Leon Blvd  
Coral Gables, FL 33146

**Showroom**

1300 SE 17th St  
Fort Lauderdale, FL 33316

*Sales and Service Dealers Throughout North America*