

# YACHT THRUSTER™

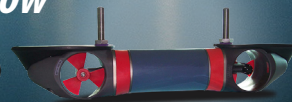
*Bow Thrusters & Stern Thrusters*



*Stern*



*Bow*



*Easy to install and perfect for power or sail boats!*



*Yacht Thruster*

## YACHT THRUSTER™

As part of The Yacht Group, Yacht Thruster brings to the yachting community the highest quality products, professionalism, and service which is the hallmark of Yacht Controller, Yacht Command, Yacht Graphx, and Yacht Visions. Offering “innovative technology for the marine industry” used on thousands of yachts of all sizes and brands.

Yacht Thruster is manufactured by the worlds #1 thruster company for bow and stern thrusters on both powerboats and sailboats. Our thrusters incorporate a unique intelligent Power Control System which prevents runaway thrusters and serious electrical

### *Easy to Mount External Thrusters*

issues. This worldwide patented feature provides you with a further assurance of safety and confidence during your maneuver operations.

Precision production produces a rugged housing manufactured out of solid machined aluminum with a hand built sealed motor using rare earth elements for power and durability. Since Yacht Thrusters are water cooled, they have exceptionally long continuous run time and low battery draw.





# PERFECT FOR POWERBOATS AND SAILBOATS

## *Powerboats*

**Bow Thruster**



**Platform Stern Thruster**



**Stern Thruster**



## *Outboards/Stern Drive/Wakeboard*

**ezDrive**



**Inboard/Outboard Thruster**

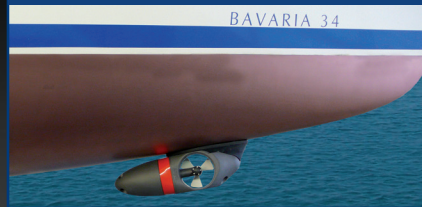


**Stern Thruster**



## *Sailboats*

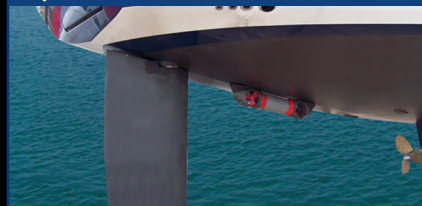
**Bow Thruster**



**Stern Thruster**



**Duplex Stern Thruster**



# **eThrust** ▶ *Externally Mounted Thruster* **Easy and quick to mount with no fiberglass lamination**

**eThrust** is innovative technology designed for ultimate performance and durability and created from a clean sheet of paper to provide a true marine thruster not merely an assembly of an electric motor coupled with a propeller. This precision machinery system exceeds expectations in performance, reliability, and durability all at a very competitive price.

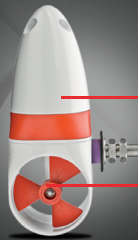
Precision product designed, engineered, tested and manufactured to provide durability and performance with more than triple the operating time of a comparative electric thruster system (with approximately one half of the battery consumption and totally sealed for almost no maintenance, other than bottom paint). Constructed of solid of machined aluminum housings for incredible strength, impact resistance, heat dissipation and low maintenance.

Yacht Thrusters use rare earth elements and technology to provide exceptionally strong power in a compact package (similar to Smartphone Technology). With total reliability and dependability and carry a 2 year warranty since the motors are virtually impervious to the elements.

## **Superior Leverage**

**eThrust's** mounting position is lower in the water and further forward providing an increased effective thrust level due to the leverage of its mounting position.

Visit [YachtThruster.com](http://YachtThruster.com) for a side by side comparison video showing this leverage in action compared to tunnel and retractable thrusters.



**Stern  
Model**

**STAINLESS STEEL  
WATERTIGHT  
THROUGH-HULL FITTING**

**SEALED ELECTRIC MOTOR**  
Rare earth magnets for low battery draw  
and extended run time.

**PROPELLER**  
In-house developed  
propeller for optimal thrust.

**HOUSING**  
Tough and durable saltwater-resistant solid  
machined aluminum housing. NO bonding required.



## **ADAPTOR INSTALLATION KIT**

Custom rubber adaptor designed  
for simple installation  
and streamlined efficiency.

**Bow  
Model**

## EXTERNAL YACHT THRUSTERS



### Bow or Stern

Length 22 in; h 6½ in; 43 lbs.  
For bow and stern installation on sailing and motor boats



### Duplex

Length 38½ in; h 6½ in; 77 lbs.  
Two thrusters mounted together in one unit



### Transom Mounted

Length 17 in; h 6½ in; 26½ lbs.  
For stern installation on boats (transom)



### Transom Mounted

Length 14.75 in; 6.5 in; 25 lbs.  
For stern installation on boats (transom) \*Perfect for Wake/Ski

MODEL	THRUST	RECOMMENDED BOAT LENGTH**							
		19	26	33	40	46	52	59	66 FT.
300 S	207 lbs.				████████████████████				
600 D	397 lbs.						████████████████████		
300 C	148 lbs.				████████████████				
77	94 lbs.	████████████							
110 Plus	136 lbs.		████████████████						

\*\* Depending on displacement and hull space considerations



# LEADING THE CONTROL REVOLUTION FOR WAKEBOARD AND SPORT BOATS

These models are offered in 35 & 50 kg's of actual thrust at 10.5 V and can be customized to fit your application.



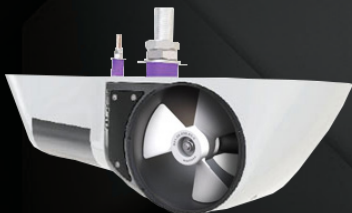
## Standard Stern Thruster with Safety Grates

The most compact stern thruster on the market. Featuring an incredibly long run time of up to 10 minutes of continuous run and low battery draw. Safety Grate option provides added protection for swimmers during watersport activities and keeps floating debris from contacting the propeller while spinning



## Custom Mount Brackets

Custom Vertical and Horizontal mounting brackets are available for applications where mounting space on transom is limited and/or obstructions close to the transom may reduce thrust performance.



## In-Flow Configuration As Bow Or Stern Thruster

By adding a low drag cover, the new generation can be mounted under the hull in the water flow on low- and mid-speed vessels. The optimal design adds minimal drag and will in most installations not be noticeable. The in-flow configuration is perfect for boats where it is difficult to fit a tunnel thruster or for example as stern thruster for cruising sailboats.



## Power Flow Nozzles

Many vessels have a hull design or equipment on the transom of the boat that might disturb the water flow entering and exiting the stern thruster, thus making it less efficient. With our large variety of custom power flow nozzles, water flow can be directed around obstructions, obtaining a higher level of efficiency and allow for a very shallow installation closer to the waterline.



# THE HISTORY *of* **ez** DRIVE

**Designed specifically for active watersports boats, wakeboard boats, and other smaller versatile watercrafts.**

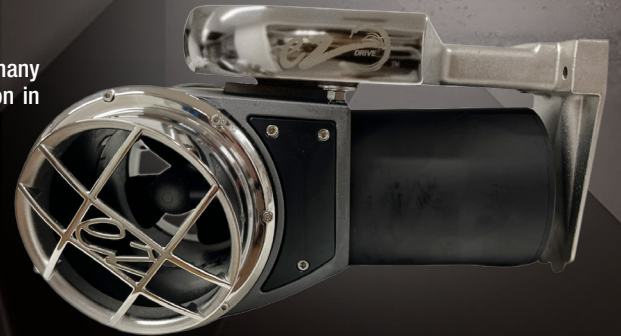
In the spring of 2016, we identified the need for a thruster which could serve the growing wake sport boat enthusiast making it easier and safer for control of their boats. Our corporate mission is and always has been to make the boating experience better. With that in mind we embarked on developing a new thruster specifically to serve that market's unique requirements. It had to be compact enough to fit below a water sports platform, powerful enough to work effectively with a ballasted wakeboard boat, full passenger compliment, and gear aboard. It also had to be energy efficient enough to operate without a separate battery in spite of heavy use with a long run time of almost 10 minutes. Additionally, since wake sport boats are almost entirely powered with gas engines, the system had to be ignition protected and fitted with waterproof connections throughout for safety and reliability.

The standard control, a small but strong military grade illuminated rocker switch, was developed to both look good and provide visual feedback to the driver. Alternatively, the thruster can be operated by a modified throttle control, illuminated joystick, or our handy multi-function micro-remote providing thruster control and optional control for trailers, lifts, lights, etc.

EZ to mount, EZ to use, saves up to 30% more fuel, and increases safety. Now enjoyed by many hundreds of enthusiasts since it's launch in late 2019. EZ drive has created a revolution in wakesurf control.

## FEATURES

- + **Increase Swimmer Safety**
- + **ez To Install on Every Brand of Wake Sport Boat**
- + **Save 30% more fuel with maneuverability efficiency**



# APPLICATIONS



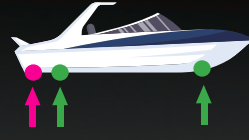
**Sailing Boat**

- **Length: 20-50 feet**  
Yacht Thruster  
(Bow and/or stern)
- **Length: 45-65 feet**  
Yacht Thruster Duplex  
(Bow and/or stern)



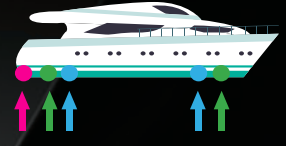
**Sport Yacht**

- **Length: 20-50 feet**  
Yacht Thruster  
(Bow and/or stern)
- **Length: 20-50 feet**  
Yacht Thruster Transom



**Cruiser Yacht**

- **Length: 40-65 feet**  
Yacht Thruster Transom
- Yacht Thruster  
(Bow and/or stern)
- **Length: 40-65 feet**  
Yacht Thruster Duplex  
(Bow and/or stern)



**Motor Yacht**

- **Length: 40-70 feet**  
Yacht Thruster Transom
- Yacht Thruster  
(Bow and/or stern)
- **Length: 40-70 feet**  
Yacht Thruster Duplex  
(Bow and/or stern)

## Yacht Thruster Control Elements for eThrust

Single Joystick OR touchpad Control + Control box is standard with all installation kits.



**NEW! MICRO REMOTE**  
Control 6 Functions



# YACHT CONTROLLER *SPORT*

## *Enjoy Joystick Control Of Your Boat! With Our*

### **THRUSTER + YACHT CONTROLLER JCS**

Our JCS Package will provide you with total control of your powerboat for movement in any direction through our electronic helm, which controls the engine and thruster with simultaneous precision to move the boat in the direction of your Joystick.

Our JCS system also allows for individual Thruster control at the touch of a button for maneuverability correction and finite control.



Stern  
Yacht Thruster



Joystick Control  
System



Wireless  
Yacht Controller



*Perfect for Center Console Boats  
or Small Yachts!*

*Contact Us To Explore How This Package Can Be Retrofitted  
On Your Existing Boat Or New Boat Build!*



## ABOUT US

As part of The Yacht Group, Yacht Controller, Yacht Thruster, Yacht Graphx, Yacht Command, Yacht Cam and Yacht Beam. We provide the yachting community with high-quality products, professional sales, and service. The hallmark of our brands is “innovative technology for the marine industry”. Our products are in use by satisfied customers on thousands of yachts of all sizes from more than hundreds of brands.

## YACHT CONTROLLER®

The yachting world's key to wireless control of a yacht during docking and maneuvering. With 15,000+ installed systems on more than 200 brands of yachts ranging in size to over 50 meters, the flawless proven security and dual-band dependability of Yacht Controller allows yacht operators to confidently control their engines, thrusters, and anchors with pleasure in absolute precision and safety from anywhere on board.



Yacht Controller JCS ( Joystick Control System) transforms a yacht's control easily, simply and cost-effectively to a simple-to-use joystick fusing numerous equipment commands into one control. Available for all types of engine controls and thrusters. Our proven system will allow you to have complete control over your vessel from fixed JCS stations (up to 6) or wirelessly when combined with our classic wireless remote or our “Fusion” remote JCS system. Yacht Controller JCS is easy to install on any size boat or yacht, whether a 40-meter Superyacht or our “Sport System” for a 40 ft. boat. Enjoy the ease of joystick control with Yacht Controller JCS.





## YACHT GRAPHX™

Yacht Graphx letters are state of the art laser cut for perfection in Stainless steel, Carbon Fiber, or Resin and available in Monochrome or Multiple color illuminated LEDs. Letters are connected via a specially designed marine electronic watertight system for stability, durability and reliability. Let us help you transform your look with Any Font, Design, Size, or Material which you prefer.

*See our easy to use Design Wizard*



## YACHT VISIONS

Redefining low-light navigation! Offering Yacht Cam cameras for ultra low-light and thermal infrared imaging and (PTZ) pan-tilt-zoom control designed specifically for use in the marine industry. Yacht Beam searchlights provide 1 million, 6 million, and 8 million candlepower high power commercial searchlights for your yacht. This is the most essential piece of equipment on board for safety at sea during low-light or night operation.



## YACHT COMMAND™

The perfect system to convert boats with mechanical or hydraulic controls to an easy to use, reliable modern electronic control system, which provides gear shifting, throttle, warm up, synchronization and more in a polished stainless steel housing for beauty and durability. Upgrade your boat and make it safer while adding to its value and improving your boating experience.







***"Innovative Technology for the Marine Industry"***

**+1.888.898.8608 TheYachtGroup.com +1.305.667.5811**

**Corporate Office**  
4545 Ponce de Leon Blvd  
Coral Gables, FL 33146

**Showroom**  
1300 SE 17th St  
Fort Lauderdale, FL 33316

***Sales and Service Dealers Throughout North America***